

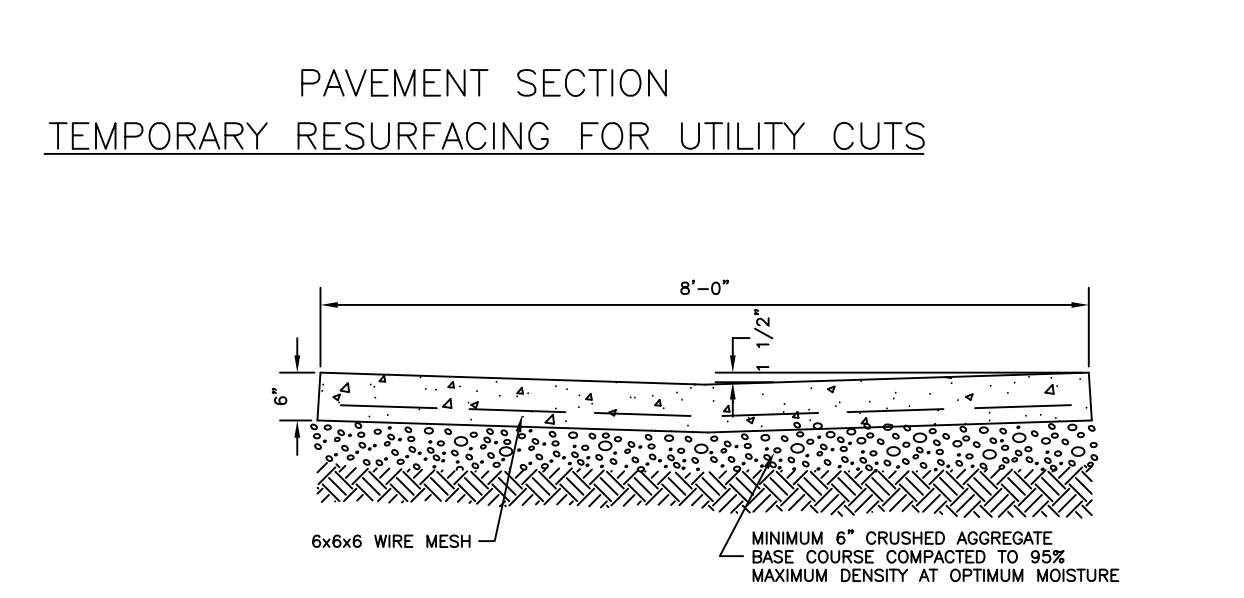
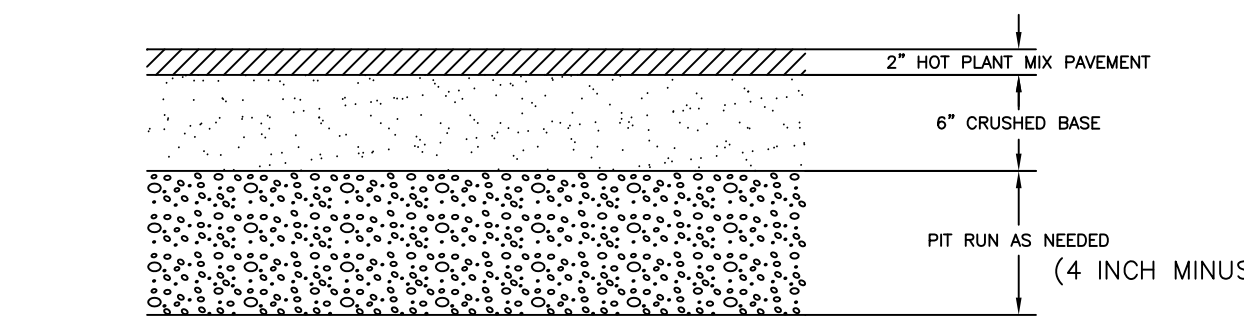
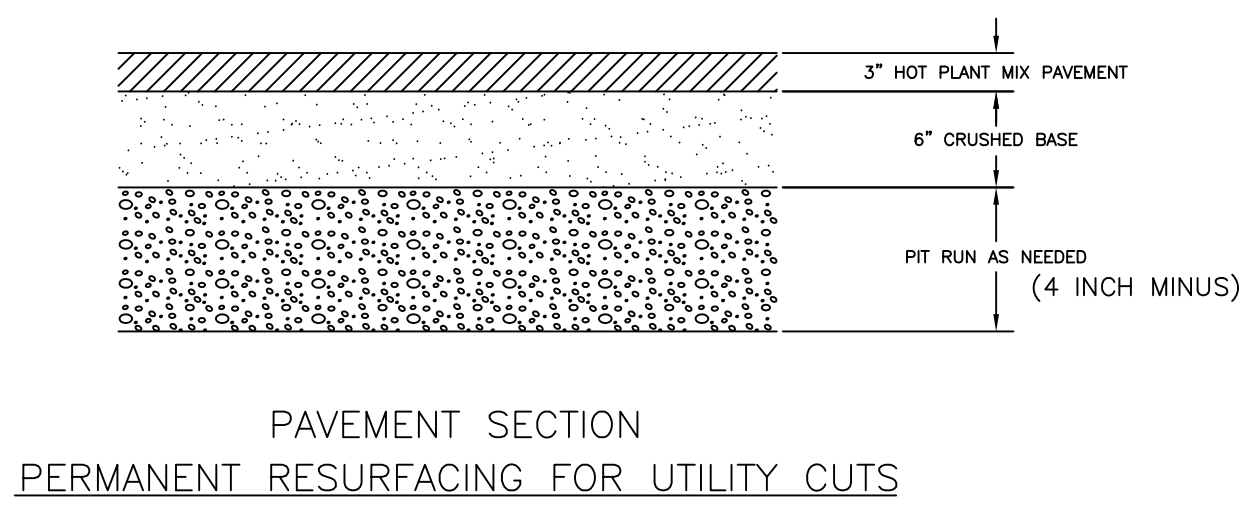
NOTE: 1. SUBGRADE COMPACTION SHALL CONFORM TO 2001 WYOMING PUBLIC WORKS STANDARD SPECIFICATIONS SECTION 02231

2. 1/2" EXPANSION JOINT MATERIAL SHALL BE PLACED AT P.C., P.T., AND CURB TURNS. CONTRACTION JOINTS SHALL COMPLY WITH 2001 WYOMING PUBLIC WORKS STANDARD SPECIFICATIONS SECTION 02202

3. NO CURB AND GUTTER SHALL BE PLACED WITHOUT A FINAL FORM INSPECTION BY THE ENGINEER.

4. CLASS A (TABLE 03304-2.08 W.P.W.) CONCRETE SHALL BE USED.

\*CONTRACTION JOINTS SHALL BE CONSTRUCTED BY SAWING OR SCORING. WHEN SCORING, A TOOL SHALL BE USED WHICH WILL LEAVE CORNERS ROUNDED AND DESTROY AGGREGATE INTERLOCK FOR SPECIFIED MINIMUM DEPTH.



NOTE: FIBER REINFORCED CONCRETE OR #3 BARS @ 12" OC EACH WAY MAY BE SUBSTITUTED FOR WELDED WIRE FABRIC UPON WRITTEN APPROVAL OF ENGINEER.

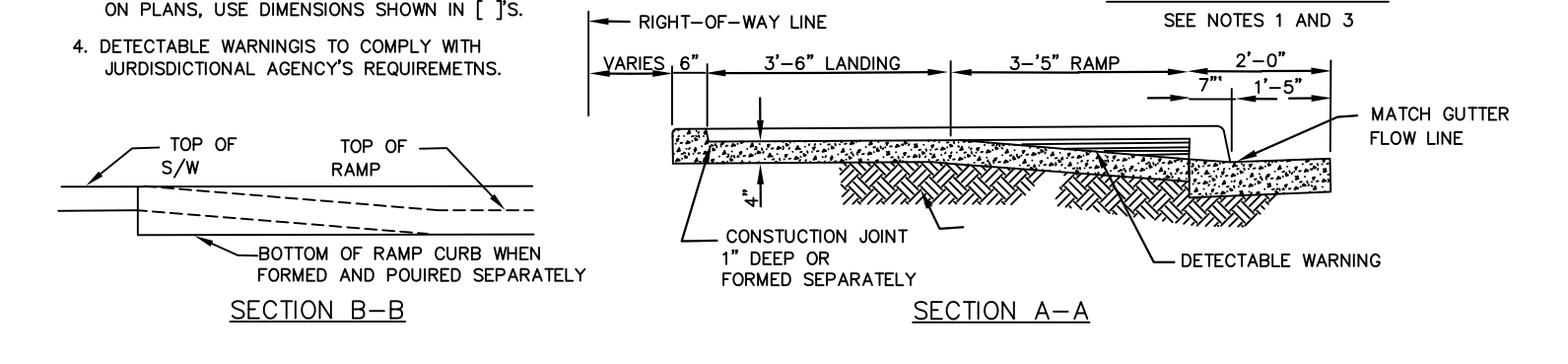
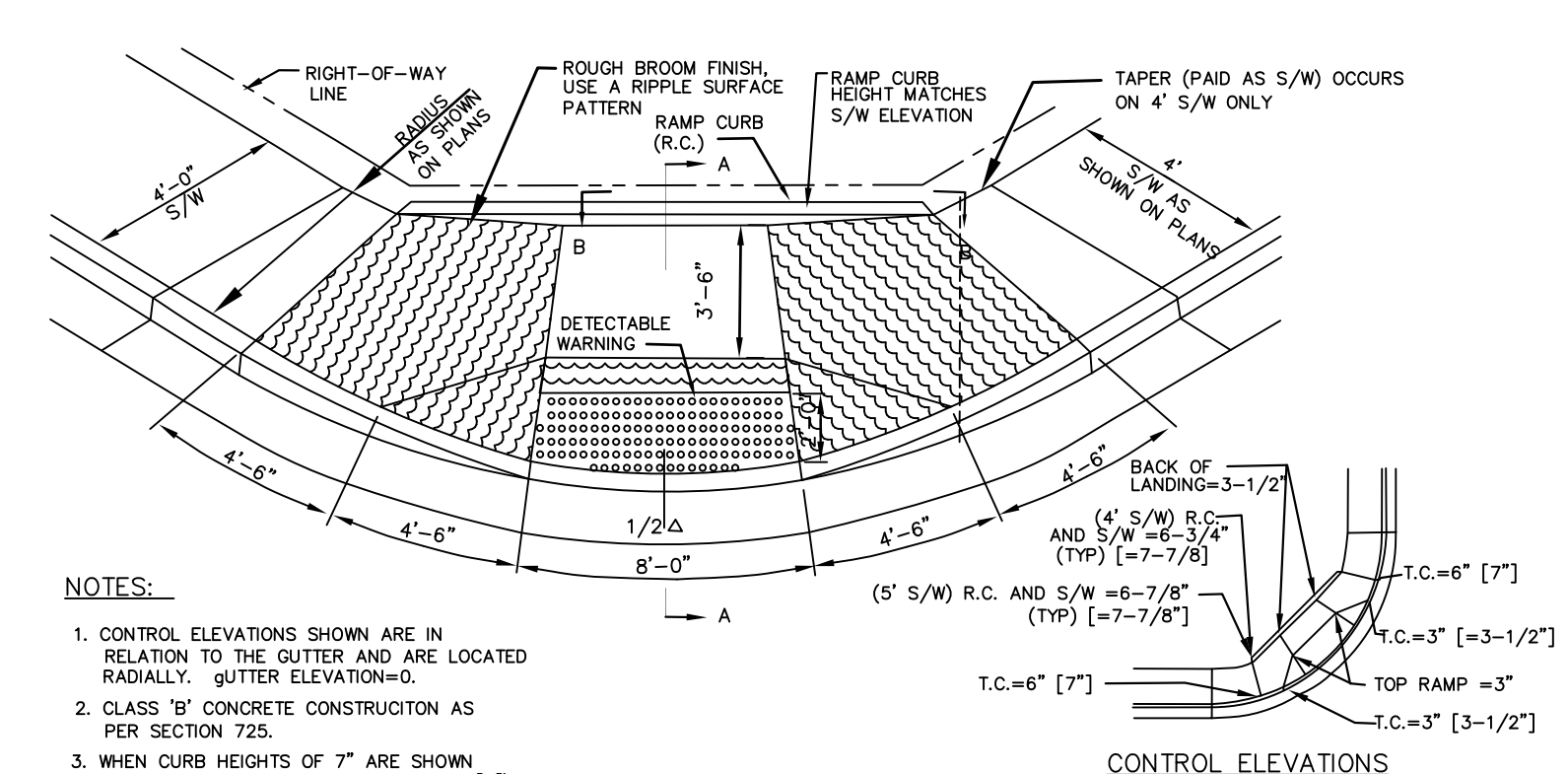
CODY MATERIAL SPECIFICATIONS

- ALL SUBBASES AND BASE COURSES SHALL BE COMPACTED TO 95% OF MAXIMUM DENSITY AT OPTIMUM MOISTURE AS DETERMINED IN ACCORDANCE WITH AASHTO 180.
  - THE MATERIAL PREPARED SHALL BE UNIFORMLY GRADED COARSE TO FINE AND SHALL NOT VARY FROM THE HIGH LIMIT ON ONE SIDE TO THE LOW LIMIT ON AN ADJACENT SIDE OR VICE VERSA.
  - THE PERCENTAGE PASSING THE NO. 200 SIEVE SHALL NOT EXCEED ONE HALF OF THE PERCENTAGE PASSING THE NO. 40 SIEVE.
  - THE MATERIAL PASSING THE NO. 40 SIEVE SHALL HAVE A LIQUID LIMIT NOT GREATER THAN 25 AND A PLASTICITY INDEX NOT GREATER THAN 6, EXCEPT WHEN THE PLASTICITY INDEX IS 0 (ZERO), THE LIQUID LIMIT SHALL NOT EXCEED 30.
  - ALL CRUSHED BASE COURSE MATERIAL SHALL MEET THE FOLLOWING GRADATION WHEN TESTED IN ACCORDANCE WITH AASHTO T-27 & T-111:
 

SIEVE	% PASSING
1" (25.4)	100
3/4" (19.0)	90-100
1/2" (12.5)	60-85
No. 4 (4.75)	45-65
No. 8 (2.0)	35-55
No. 200 (0.075)	3-12
- AGGREGATE FOR HOT PLANT PAVEMENT MIX - IN ACCORDANCE WITH WYOMING TRANSPORTATION DEPARTMENT STANDARD SPECIFICATIONS-LATEST EDITION.
  - FOR COMPACTED THICKNESSES 3" OR LESS, USE WYDOT 3/4-INCH MAXIMUM AGGREGATE.
  - FOR COMPACTED THICKNESSES GREATER THAN 3" USE WYDOT 3/4-INCH MAXIMUM AGGREGATE FOR FIRST LIFT. SECOND LIFT SHALL BE A MINIMUM COMPACTED THICKNESS OF 1-1/2 INCHES, 1/2-INCH MAXIMUM AGGREGATE.
  - MINERAL FILLER: FINELY GROUND PARTICLES OF LIMESTONE, HYDRATED LIME OR OTHER MINERAL DUST, FREE OF FOREIGN MATTER.
- PRIMER: A CUT-BACK LIQUID ASPHALT OF THE MEDIUM CURING TYPE, GRADE C-70, AND SHALL COMPLY WITH THE REQUIREMENTS OF ASTM D2027. BITUMINOUS HOT MIX PAVEMENT SHALL BE APPROVED BY THE CITY ENGINEER BEFORE ANY WORK MAY.
- TACK COAT: A CATIONIC SLOW SET EMULSIFIED ASPHALT MIXED WITH A N EQUAL AMOUNT OF WATER, GRADE CSS-1H, AND SHALL COMPLY WITH THE REQUIREMENTS OF ASTM D244. OTHER GRADES OF EMULSIFIED ASPHALT WILL BE CONSIDERED TESTING OR EXPERIENCE IN ANOTHER GRADE IS MORE SUITABLE.
- MIX DESIGN: A COMPLETE MIX DESIGN MEETING THE REQUIREMENTS OF A1 MS-2 COMPLETED WITHIN THE LAST 24 MONTHS FOR THE SPECIFIC MATERIALS TO BE USED SHALL BE SUBMITTED FOR APPROVAL PRIOR TO BEGINNING WORK.
  - MS-2 ESTABLISHES THE FOLLOWING REQUIREMENTS FOR THE ASPHALT CEMENT CONCRETE FOR A MEDIUM TRAFFIC VOLUME:
 

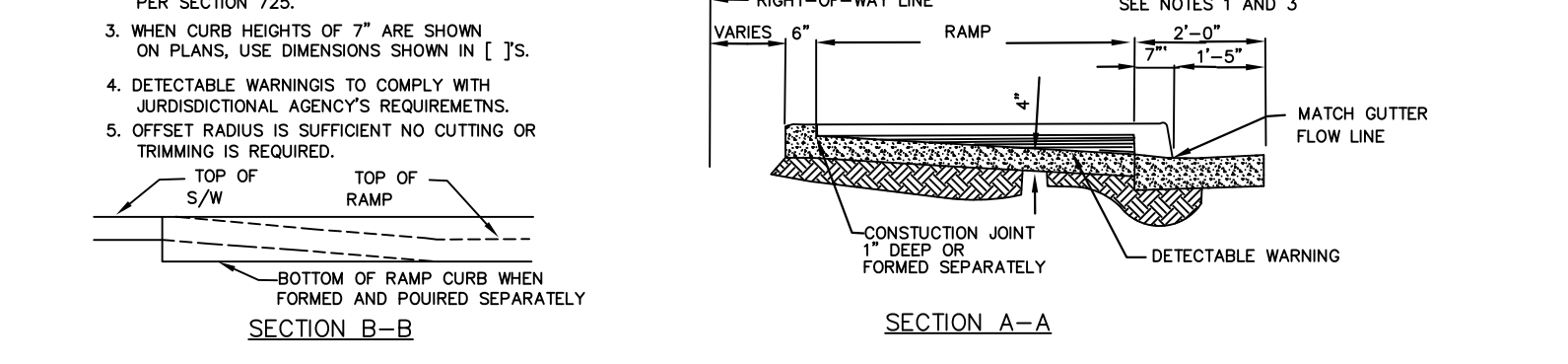
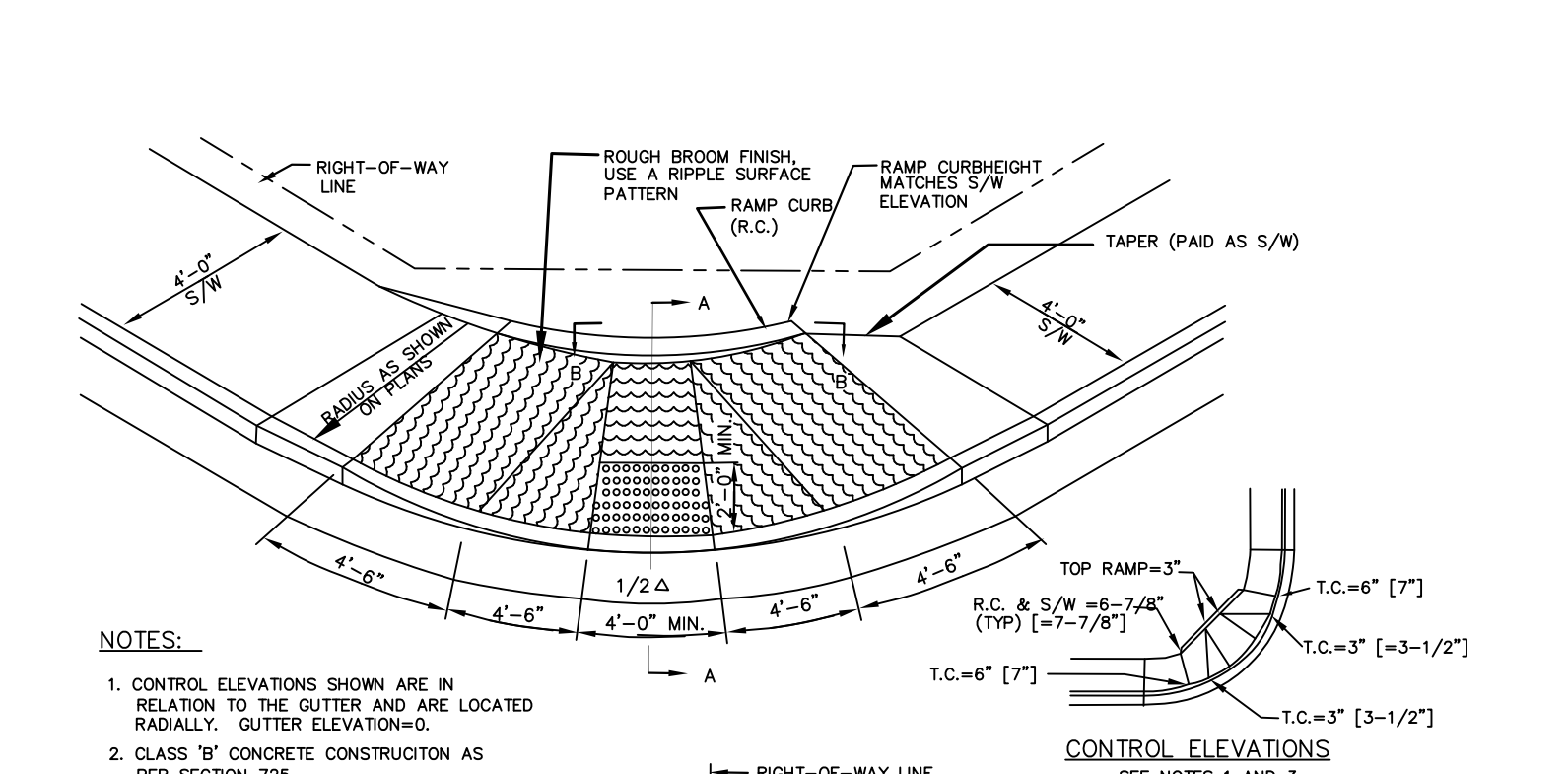
STABILITY (LB. MINIMUM)	1200
0.01 IN.	8 TO 16
PERCENT AIR VIDS (9)	3 TO 5
VOIDS IN MINERAL AGGREGATE (% MINIMUM)	3

CALL 1-800-849-2476  
48 HOURS BEFORE YOU DIG  
CITY OF CODY  
WYOMING



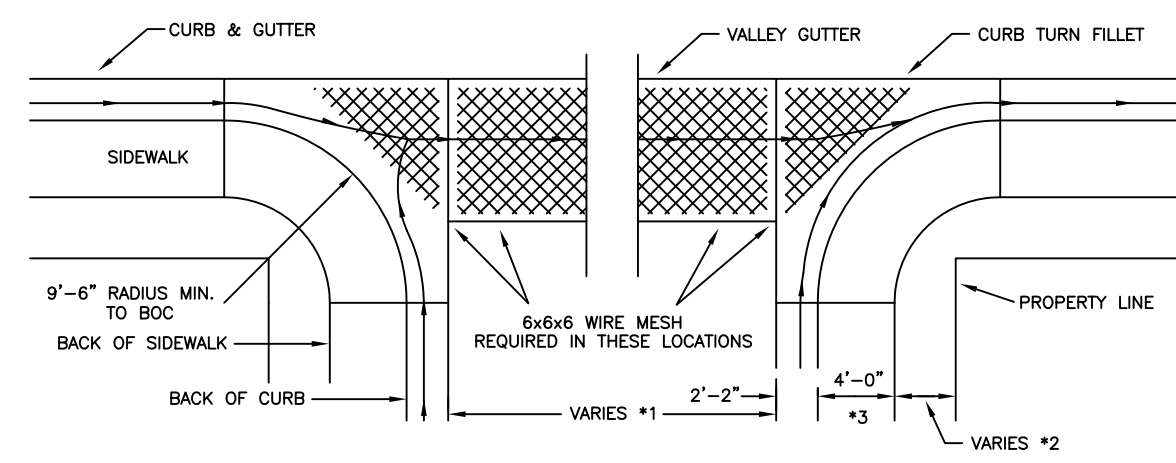
NOTES:

- CONTROL ELEVATIONS SHOWN ARE IN RELATION TO THE GUTTER AND ARE LOCATED RADIALLY. GUTTER ELEVATION=0.
- CLASS "B" CONCRETE CONSTRUCTION AS PER SECTION 725.
- WHEN CURB HEIGHTS OF 3" ARE SHOWN ON PLANS, USE DIMENSIONS SHOWN IN [ ]S.
- DETECTABLE WARNINGS TO COMPLY WITH JURISDICTIONAL AGENCY'S REQUIREMENTS.

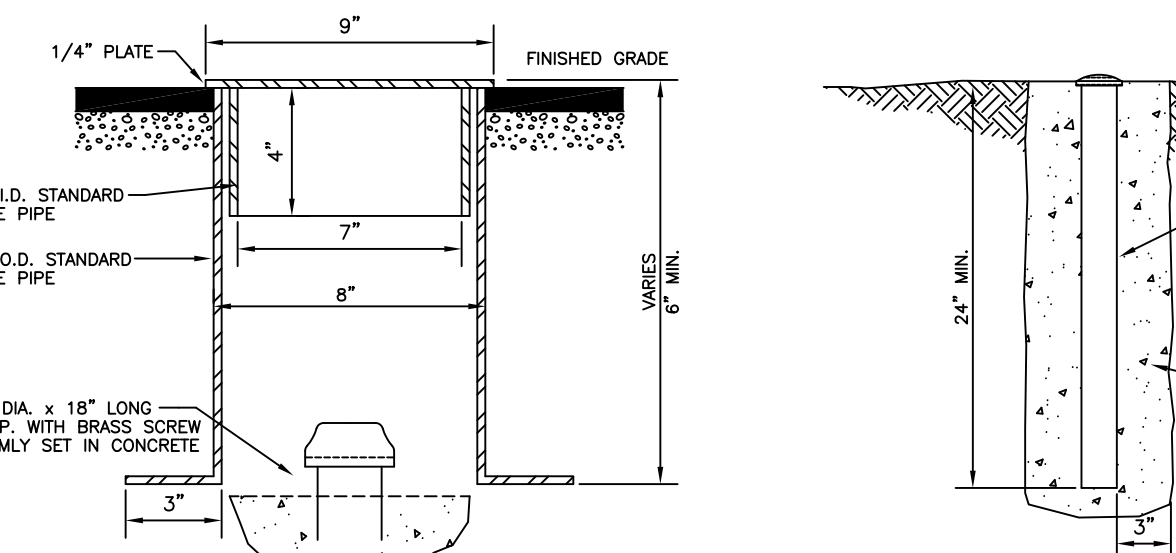


NOTES:

- CONTROL ELEVATIONS SHOWN ARE IN RELATION TO THE GUTTER AND ARE LOCATED RADIALLY. GUTTER ELEVATION=0.
- CLASS "B" CONCRETE CONSTRUCTION AS PER SECTION 725.
- WHEN CURB HEIGHTS OF 3" ARE SHOWN ON PLANS, USE DIMENSIONS SHOWN IN [ ]S.
- DETECTABLE WARNINGS TO COMPLY WITH JURISDICTIONAL AGENCY'S REQUIREMENTS.
- OFFSET RADIUS IS SUFFICIENT NO CUTTING OR TRIMMING IS REQUIRED.



TYPICAL STREET CORNER DETAIL: CURB TURN FILLET, SIDEWALK & VALLEY GUTTER



GENERAL NOTES

- PLACE TRUNCATED DOME DETECTABLE WARNING PANELS AT THE BASE OF CURB RAMP. INSTALL ACROSS FULL WIDTH OF RAMP. A MINIMUM 610mm (24") IN DEPTH AND SET BACK 230mm (9") FROM BOTTOM OF CURB.
- SIDEWALK CURB RAMP SLOPES SHOWN ARE RELATIVE TO THE TRUE LEVEL HORIZON (ZERO BUBBLE).
- IN ALTERATIONS CURB RAMP SLOPES MAY BE 10% FOR A MAXIMUM RISE OF 150mm (6") OR 12.5% FOR MAXIMUM RISE OF 75mm (3"). CURB RAMP, IN ALTERATIONS, NEED NOT EXCEED 1.8m (6'-0") IN LENGTH.
- SIDE FLARES THAT ARE NOT PART OF THE PATH OF TRAVEL MAY BE ANY SLOPE.
- FOR THE PURPOSES OF THIS DRAWING, A CURB RAMP IS CONSIDERED "PERPENDICULAR" IF THE ANGLE BETWEEN THE LONGITUDINAL AXIS OF THE RAMP AND A TANGENT TO THE CURB AT THE RAMP CENTER IS 75 DEGREES OR GREATER.
- TOOLED JOINTS ARE REQUIRED AT ALL SIDEWALK RAMP SLOPE BREAKS.
- SIDEWALK FLARE IN NOT NECESSARY WHERE THE RAMP IS PROTECTED FROM PEDESTRIAN CROSS-TRAVEL.
- THICKEN CONCRETE UNDER DETECTABLE WARNING PANEL.
- IN FREEZE THAW ZONES, LEAVE 3/16" GAP IN BETWEEN PANELS AND SEAL WITH SIKAFLEX 1A SEALANT.

1 CHANGE GRADATIONS	9/16/98 HMC	DRAWN BY: ULD
2 INFO CORRECTIONS	10/28/98 HMC	CHECKED BY: SWP
3 INFO CORRECTIONS	11/7/00 ULD	JOB NAME: STREET STANDARD DETAIL
4 INFO CORRECTIONS	7/23/02 ULD	FILE NAME: H:ENGINEERING\AUTOCAD~\DETAILS
5 INFO CORRECTIONS	8/28/03 ULD	DATE: 7/06/2015
6 INFO CORRECTIONS	8/28/03 ULD	BY DATE: 7/06/2015
7 ADA SIDEWALK REGS	7/23/04 ULD	REVISION
8 REVISED HANDOUT MATERIALS SPECIFICATIONS	5/26/06 ULD	
9 REVISED HANDOUT MATERIALS SPECIFICATIONS	7/25/07 ULD	
10 MADE REVISION TO SPECIFICATIONS	7/06/15 ULD	
11 MADE REVISION TO HANDICAP RAMP		

STANDARD STREET DETAIL SHEET
SHEET 4 OF 4